



2024 Girls State Tennis Championship Information

1. **AWARDS.**

- a. Following the conclusion of the last match, all first, second, third, fourth, fifth, sixth, seventh, and eighth place medals will be presented to each division.
- b. Team runner-up and championship trophies and medals will be presented following individual honors.
- c. Championship team coaches will also receive an award.

2. **BALLS.**

New balls will be provided at the start of each match and shall be used for the first two sets. If a third set is required, two new balls will be provided.

3. **QR CODE AVAILABLE FOR CHAMPIONSHIP RESULTS**

A QR code will be available at the tournament site and found in the championship program for spectators to follow the progression of the tournament.

4. **NSAA SPORTSMANSHIP BYLAWS.**

- a. Unsportsmanlike conduct shall include the following: fighting, verbal abuse or dissent towards an opponent, coach, fan, or spectator, racial or ethnic slurs, inappropriate comments or actions that may be construed as sexual harassment, profanity, obscene gestures, flagrant and violent fouls, taunting, trash talk, baiting, cheating, throwing or abusing equipment, inappropriate posters, physical intimidation or abuse of an official or opponent, and unauthorized leaving of a team bench area.
- b. **Spectator conduct.** In paralleling USTA expectations, a player shall not be harassed. If a player is harassed (excessive yelling, noise makers, visual distractions) the player(s) shall notify the on-site representative. The player(s) shall not leave the court. The on-site NSAA representative shall instruct those spectators creating the distraction to cease. The administrator/coach of that team of which the spectators are identified shall be informed to assist in handling the situation. If the harassment continues, the spectators creating the disturbance will be asked to leave the facility.

Respect and good sportsmanship are essential for high school athletics. The Nebraska School Activities Association encourages good sportsmanship by students, athletes, coaches, and spectators during the NSAA State Tennis Championships.” “During each match, the Nebraska School Activities Association expects fans, players, and coaches of both schools to demonstrate respect, sportsmanship, and ethical behavior at all times. Support your team and exhibit good sportsmanship during the NSAA State Tennis Championships.

5. COACHING.

- a. Coaches must remain off the court during all matches.
- b. **Only the certified head coach and assistant coach as designated by that school's administration is allowed to coach.**
- c. **The certified head coach and certified assistant coach will be provided with a lanyard/credential that should be visible at all times while coaching. The only individuals that should have this credential are the head coach and the assistant coach that is listed on the state entry form that was submitted to the NSAA.**
- d. Coaches are allowed to give instruction at any time during a match, with the following restrictions:
 - A. No coaching while the ball is in play.
 - B. Coaching in between points cannot delay play and must be done within the time allowed between points. (25 seconds).

6. ELECTRONIC DEVICES

NO electronic devices may be in operation on the court. A cell phone **MUST** be turned off and out-of-sight. (USTA Rule 30). **This includes Smart Watches.**

7. ELIMINATION.

Day 1 –

Single Elimination

All play-in and first round matches will be played 8 game pro-set. All matches following the first round on Day 1 will be played 2-out-of-3 with a 10-point tie break replacing the final set.

When the score in a match is one set all, one tie-break game shall be played to decide the match. This tie-break game replaces the deciding final set. The player/team who first wins ten points shall win this match tie-break and the match provided there is a margin of two points over the opponents.

When using the match tie-break to replace the final set:

***the original order of service continues.**

***in doubles the order of serving and receiving within the team may be altered, as in the beginning of each set.**

***before the start of the match tie-break there shall be a three-minute set break.**

***balls should not be changed before the start of the match tie-break even if a ball change is due.**

Day 2 –

Play-in matches, matches for 5th & 6th and 7th and 8th will be played 8 game pro-set.

Semi-finals, 3rd & 4th and Championship Final matches will be played 2-out-of-3 sets.

8. WARM-UP. A ten-minute warm-up for each match will be provided.

9. TIME BETWEEN SETS – 2 minutes

10. TIME BETWEEN MATCHES. A maximum of 30 minutes between first-day matches will be provided. A maximum of 60 minutes between the semi-finals and finals matches when all three sets of the semi-final's matches were played.

11. INCLEMENT WEATHER.

When all matches are moved indoors due to inclement weather on day one, the tournament director has the authority to change the format and scoring for the State Championship.

Schools shall report to Woods Tennis Center, 401 S 33rd St, Lincoln, NE

12. NEBRASKA STATE TENNIS TOURNAMENT DEFAULT RULE.

- a. The state tournament director shall default a player for tardiness.
- b. The following default rule shall apply during any NSAA state tennis tournament:
 1. A player who finds that they will be delayed in arriving at the state tournament, through no fault of their own, must notify the tournament director. The director may delay the match's starting time if prior arrangements can be made to assure the player's arrival as to not delay play in that round of their division.
 2. If a player has an unexcused tardiness and has not contacted the tournament director, that player shall be penalized one game for each 5-minute delay for the first 15-minutes absence from the time the match is called to begin, and both the court and opponent are ready. After 15-minutes, the tournament will default the absent player.
 3. A default match will be scored 6-0, 6-0.

13. **INJURY TIME OUT** – 3 minutes when trainer arrives on the court, maximum total time is 15 minutes. After the 3 minutes of treatment, the player must play or retire. It is called a "retirement" not a "default" when the player stops playing due to illness or injury. **A player may get only one medical time out per injury.**

14. OFFICIALS.

- a. The meet director is responsible for the conduct and management of the championship and shall make decisions of matters not specifically covered by the rules, in addition to having general supervision of other officials. The meet director's decision is final.
- b. A supervisor is available for sportsmanship violations. The supervisor will note the unsportsmanlike violation to the tournament director.
- c. Schools are asked to provide their own scorekeepers for their matches. Scorecards will be provided. At the completion of each match the players will be required to review and sign the scorecard and return it to the NSAA Head Quarter's table.
- d. Official rovers or chair umpires, if available, will be assigned to courts.
- e. Idle coaches may be asked to serve as line judges if the need arises.
- f. The following procedure is to be followed if a player requests an official:
 1. A player who encounters a problem is NOT to leave the playing area. ***A default will be declared if the player leaves the playing area.***
 2. The player shall inform the coach that an official is needed for assistance.
 3. Play continues while the request is under consideration.

Reminder: Players and coaches are always to show courtesy and respect to the tournament officials and opponents.

15. **PROGRAMS.** Two complimentary programs will be provided to each team.

16. REPORTING IN

- a. All teams shall report to the **Woods Tennis Center**, 401 S. 33rd St. Lincoln.
- b. **It is required that a certified staff member from a school, checks in and is present for all matches.**

17. SCHEDULE.

Girls State Championship Schedule

Woods Tennis Center, 401 S 33rd St., Lincoln, NE 68510

Class A - Thursday, May 16

8:30 a.m. Team Check-in

9:00 a.m. Play-in and First Round Matches - 8 game pro-set.

***All matches following the first round on Day 1 will be played 2-out-of-3 with a 10-point tie break replacing the final set.**

Class A - Friday, May 17

8:30 a.m. Team Check-in

9:00 a.m. Play-in for 5th/6th Place Matches – 8 game pro-set

9:00 a.m. Semi-Final Matches – 2-out-of-3 sets

11:00 a.m. 5th/6th-7th/8th Place Matches – 8 game pro-set

1:00 p.m. Championships & 3rd/4th Place Matches – 2-out-of-3 sets

(Class A Inclement Weather Date – Saturday, May 18th)

Class B - Monday, May 20

8:30 a.m. Team Check-in

9:00 a.m. Play-in and First Round Matches - 8 game pro-set.

***All matches following the first round on Day 1 will be played 2-out-of-3 with a 10-point tie break replacing the final set.**

Class B – Tuesday, May 21

8:30 a.m. Team Check in

9:00 a.m. – Play-in 5th/6th Place Matches – 8 game pro-set

9:00 a.m. – Semi-Final Matches – 2-out-of-3 sets

11:00 a.m. – 5th/6th- 7th/8th Place Matches – 8 game pro-set

1:00 p.m. – Championships & 3rd/4th Place Matches – 2-out-of-3 sets

(Class B Inclement Weather Date – Wednesday, May 22)

Note: When matches are moved indoors due to inclement weather, matches may be moved back outdoors as outdoor courts become playable.

In the event of inclement weather, teams shall report to Woods at the scheduled time and the matches will be played indoors.

18. SUBSTITUTIONS –

If an alternate player(s) is used, the NSAA must be notified before the seeding meeting.

Exception:

1. If a player is injured or becomes ill immediately preceding their first match of the tournament and the tournament director receives notification of this illness/injury via a physician.
2. If a player is withdrawn due to disciplinary action immediately preceding his first match and the tournament director receives notification from the school administration in writing.
 - a. **Only substitutes listed on the NSAA official state entry can be used.**
 - b. No substitutions shall be allowed once the tournament begins.

Individuals may not be changed from singles to doubles, or visa versa, after entries have been received in the NSAA office.

19. TEAM SCORING.

#1 Singles	4 Points
#2 Singles	2 Points
#1 Doubles	4 Points
#2 Doubles	2 Points
#1 Singles 3 rd Place	1 Point
#2 Singles 3 rd Place	½ Point
#1 Doubles 3 rd Place	1 Point
#2 Doubles 3 rd Place	½ Point
#1 Singles Play-in 5 th /6 th	½ Point
#2 Singles Play-in 5 th /6 th	¼ Point
#1 Doubles Play-in 5 th /6 th	½ Point
#2 Doubles Play-in 5 th /6 th	¼ Point
#1 Singles 5 th Place	½ Point
#2 Singles 5 th Place	¼ Point
#1 Doubles 5 th Place	½ Point
#2 Doubles 5 th Place	¼ Point
#1 Singles 7 th Place	¼ Point
#2 Singles 7 th Place	1/8 Point
#1 Doubles 7 th Place	¼ Point
#2 Doubles 7 th Place	1/8 Point

- a. First singles and first doubles, team points will be awarded as follows:
 1. Four points for each advancement.
 2. An entry winning a second-round match after drawing a first-round bye, will receive 8 points (4+4).
- b. Second singles and second doubles, team points will be awarded as follows:
 1. Two points for each advancement.
 2. An entry winning a second-round match after drawing a first-round bye will receive 4 points (2+2).
- c. Matches played for third/fourth, fifth/sixth, seventh/eighth places.
 1. Points for 3rd place, play-in match, 5th place and 7th place matches:
 - #1 Divisions - 3rd place: 1 point
 - #2 Divisions - 3rd place: ½ point
 - #1 Divisions – 5th/6th Play-in: ½ point
 - #2 Divisions – 5th/6th Play-in: ¼ point
 - #1 Divisions - 5th place: ½ point
 - #2 Divisions - 5th place: ¼ point
 - #1 Divisions - 7th place: ¼ point
 - #2 Divisions - 7th place: 1/8 point
- d. Team championship tiebreaker.

If a tie exists, the total number of games played will be divided into the total number of games won for the team's total entries. The highest percentage will be declared champion.

20. OFFICIAL TIEBREAKER. In compliance with the USTA, the 7-point tie breaker will be used when the set score reaches 6-all and the procedure is as follows:

- a. Singles

1. A player who first wins 7 points shall win the game and the set provided he leads by a margin of 2 points. If the score reaches 6 points all, the game shall be extended until this margin has been achieved. Numerical scoring shall be used throughout the tiebreak game.
 2. From the first point, each service shall be delivered alternately from the right and left courts beginning from the right court. If service from a wrong half of the court occurs and is undetected, all play resulting from such wrong service or services shall stand, but the inaccuracy of station shall be corrected immediately upon discovery.
 3. Players shall change ends after every 6 points and at the conclusion of the tiebreaker game.
- b. Doubles
 1. In doubles the procedure for singles shall apply. The player whose turn it is to serve shall be the server for the first point. Thereafter, each player shall serve in rotation for two points, in the same order as previously in that set until the winners of the game and set have been decided.
 - c. Rotation of Service
 1. The player (or pair in the case of doubles) who serves first in the tiebreak game shall receive service in the first game of the set.

21. DRESS CODE. Your team represents you and your school, so please see that your players are dressed in appropriate tennis attire (shorts, shirt and tennis shoes). Examples of inappropriate attire are:

- a. Clothing bearing alcohol/drug inference.
- b. Boxer shorts worn or tattered.
- c. Cut-offs worn or tattered.
- d. Worn or tattered shirts.
- e. Cut-off sweatpants.

The tournament director has the authority to require a competitor who is wearing inappropriate attire to change before being allowed to compete.

22. T-SHIRTS. State tournament t-shirts will be on sale. To order a shirt, please click [here](#).

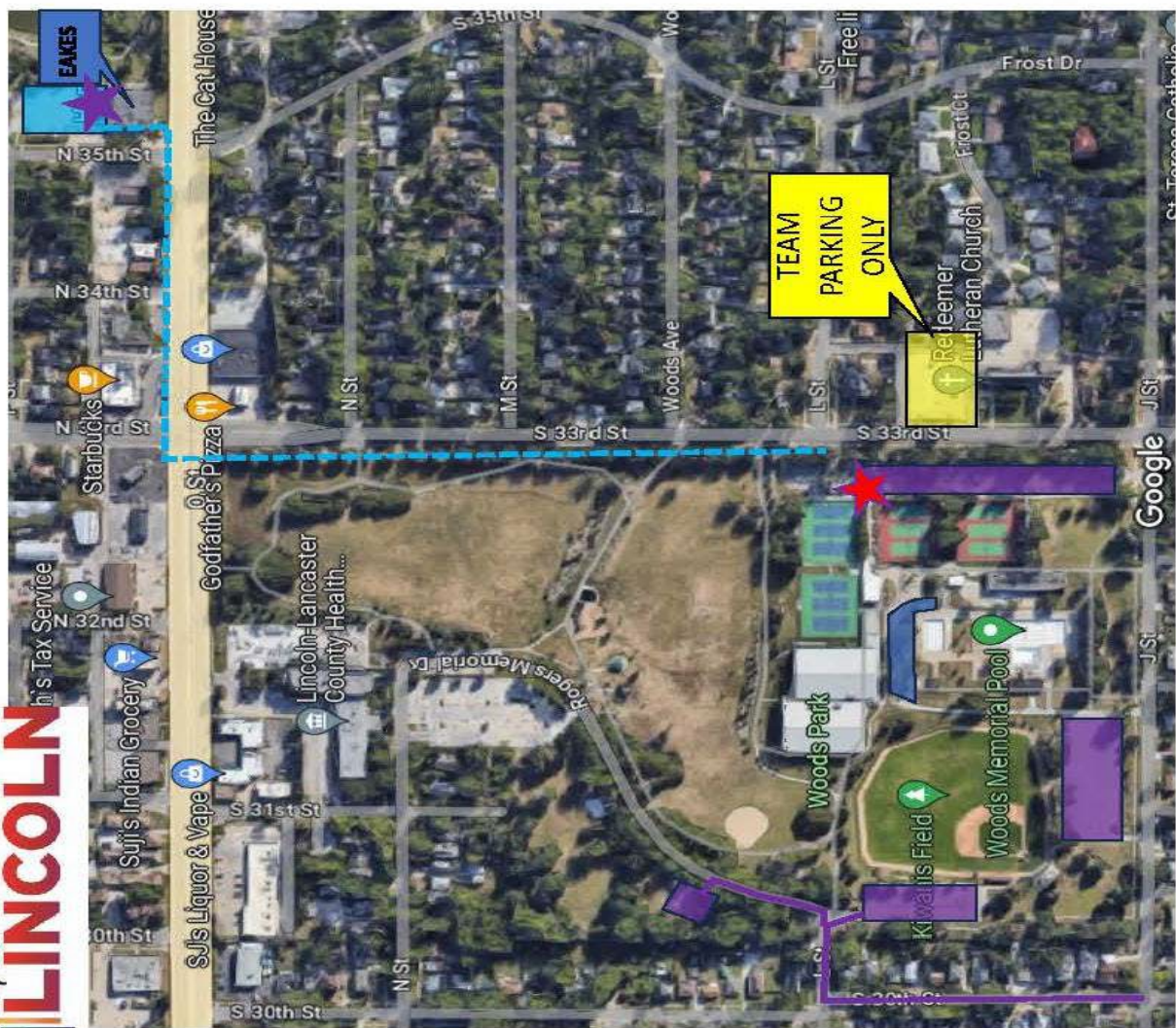
23. Photographer. A photographer contracted with the NSAA will be on site taking photos as well as photos of the champion and runner-up teams.

24. Trainer. A certified Athletic Trainer will be available by the scorer's table.

25. Parking.

Vans are asked to park in the church parking lot across the street to the east of Woods Tennis Center. Parking lots surrounding the tennis facility to the west are open to the public.

26. Awards Ceremony. When all matches have been completed on Friday, an awards ceremony will be conducted. Medals will be presented to the **top 8** individuals in each division in each class. When the athletes name is called, the athlete shall step forward and pick up their medal from the medal table. A championship trophy, team medals, and a coach's award for the championship team coach; and a runner-up trophy and team medals will be presented in each class.



KEY

- Walking Path To & From Shuttle Lot
- Team Parking
- Spectator Parking
- Eakes Office Solutions Shuttle Service 110 N 35th St, Lincoln, NE 68503
- Woods Tennis Center Shuttle Service 401 S 33rd St, Lincoln, NE 68510
- Driving Directions to Additional Parking Lots
- Team Tent & Meet Up Locations

SHUTTLE SERVICE

First Shuttle will depart Eakes Office Solutions to Woods Tennis Center at 8:30am on Day 1 of State. Last Shuttle will depart Woods Tennis Center for Eakes Office Solutions at 3:30 pm on Day 1 of State.

- Eakes Office Solutions to Woods Tennis Center Departs every 15 minutes. X:00, X:15, X:30, X:45
- Woods Tennis Center to Eakes Office Solutions Departs at every 15 minutes. X:00, X:15, X:30, X:45

IMPORTANT

- **PLEASE DO NOT PARK in neighborhoods around Woods Tennis Center.
- **Bleachers and picnic tables are for all spectators.
- TEAM ARE NOT TO USE THESE AS MEETING SPACES**



Day 1 Inclement Weather Procedure

Matches will be indoors at Woods Tennis Center.

Matches will be assigned in match order as courts become available.

When all matches are moved indoors due to inclement weather on Day 1, the tournament director has the authority to change the format and scoring for the State Championship.

The last matches of Day 1 will be placed on the court at 8:00 pm. If matches up to the semifinal matches have not concluded, matches will resume at 8:00 am Friday.

Day 2 Inclement Weather Procedure

*Carry over matches from Day 1 up to the semifinals
could be played 8 game pro-set.*

**ALL 3rd & 4th, SEMI FINAL, FINAL MATCHES
2-OUT-OF-3 SETS.**

Play-in matches, 5th & 6th place and 7th & 8th place Matches
8 game pro-set

NEBRASKA SCHOOL ACTIVITIES ASSOCIATION

Tennis Scorecard Instructions

Players will pick up a scorecard along with a pencil and two tennis balls from the tournament official when their match is called. The scorecard is to be returned to the tournament official at the conclusion of the match. The scorecard looks like this:

Circle Match:	1st Singles	2nd Singles	1st Doubles	2nd Doubles
Match # _____	Time _____	Court # _____		
Player A _____	Player B _____			
School _____	School _____			

SET 1 **Winner** _____
Score _____

SET 2 **Winner** _____
Score _____

SET 3 **Winner** _____
Score _____

Tie Breaker Points (7 of 12) must win by 2.

Winner _____ **Final Score** _____

Scorekeeper _____

Players shall indicate the winner and score for each set.

At the conclusion of the match, indicate the winner of the match including the final score.

If a tiebreaker is needed at the conclusion of a 6-6 set, use the bottom of the card to tally the twelve-point tiebreaker.

Sign your name at the bottom of the card at the conclusion of the match and return to the tournament official.